

# Pro-gard™

PRODUCTS LLC.



## ***SECURE YOUR FLEET WITH PRO-GARD***

PARTITIONS / WINDOW ARMOR / ABS SEATS / GUN RACKS / ORGANIZERS / PUSH BUMPERS / SKID PLATES

800 - 480 - 6680 / F : 317 - 579 - 6681 / [www.Pro-gard.com](http://www.Pro-gard.com)

AFTER MORE THAN 25 YEARS IN BUSINESS, Pro-gard™ HAS GROWN TO BECOME ONE OF THE LEADING MANUFACTURERS OF LAW ENFORCEMENT EQUIPMENT BY FOLLOWING A SIMPLE MISSION: PROVIDE THE SAFEST, MOST DURABLE PRODUCTS DESIGNED TO PERFORM ON THE OPEN ROAD. PERIOD. CHECK OUT OUR ENTIRE LINE AND SEE FOR YOURSELF WHY MORE AND MORE LAW ENFORCEMENT AGENCIES ARE TURNING TO US FOR PROTECTION.



800-480-6680

Pro-gard.com



PRO-CELL



CARGO BARRIERS



SEAT ORGANIZERS



PARTITIONS



ABS SEATS



TRUNK ORGANIZERS



PUSH BUMPERS



WINDOW ARMOR

# PARTITIONS

NOTHING IS MORE IMPORTANT THAN MAINTAINING CONTROL OVER YOUR PRISONER DURING TRANSPORT. Pro-gard's PRISONER SECURITY PARTITIONS ARE DESIGNED TO PROVIDE SAFETY AND ARE EASY TO INSTALL WITH OUR EXCLUSIVE \*NO HOLES DRILLED, NO TRIM CUT SYSTEM.



- 1-5/8" FULL ROLL BAR CONSTRUCTION
- ANODIZED ALUMINUM WINDOW FRAME
- HIGH DENSITY FOAM PADDING
- SCRATCH RESISTANT POLYCARB WINGS



- HIGH SECURITY CONSTRUCTION
- MULTIPLE WINDOW CONFIGURATIONS



- 14 GAUGE STEEL CONSTRUCTION
- DURABLE POWDER COATED FINISH



- OPTIONAL LOWER SEAT PROTECTOR  
ADDED PROTECTION FROM PRISONER



- OPTIONAL SPACE SAVER PANEL WILL ALLOW FOR VERTICAL GUN RACK SYSTEM.
- OPTIONAL HORIZONTAL CAGE MOUNTED GUN RACK



- Shown with optional space saver panel and vertical gun rack.

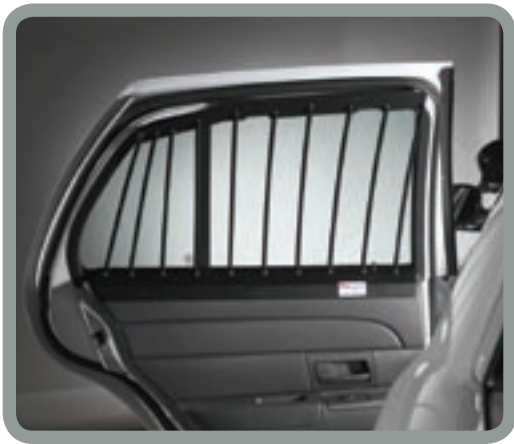
## Available for:

- Ford Crown Victoria\*
- Ford Explorer\*
- Ford Expedition\*
- Ford F150 4-Door\*
- Chevy Impala
- Chevy Tahoe\*
- Dodge Charger
- Dodge Durango\*

## When Ordering Specify:

- Vehicle
- Window Configuration

1



## WINDOW ARMOR

- STEEL CONSTRUCTION
- VERTICAL METAL BARS
- NO HOLES DRILLED INSTALLATION
- AVAILABLE FOR THE DODGE CHARGER / FORD CROWN VICTORIA / CHEVY IMPALA
- COMPATIBLE WITH FACTORY DOOR PANEL OR PRO-GARD ABS DOOR PANEL



## ABS SEATS & FLOOR PANS



## VAN BARRIERS



- 4 GAUGE COATED WIRE SCREEN
- 2" X 2" GRID
- 52.5" HIGH X 38-71" WIDE
- IDEAL FOR SECURING CARGO
- EXPANDABLE FOR CUSTOM FIT



- CONTRABAND CONTROL - PATHOGEN CONTROL
- EASY CLEAN-UP - QUICK SERVICE TURNAROUND
- MEETS & EXCEEDS NHTSA FIRE RETARDANT SPECIFICATION
- MEETS & EXCEEDS NHTSA PASSENGER RESTRAINT SPECIFICATION
- AVAILABLE FOR THE DODGE CHARGER / FORD CROWN VICTORIA / CHEVY IMPALA
- COMPATIBLE WITH FIRE SUPPRESSION SYSTEM FOR FORD CROWN VICTORIA



3

Pro-gard's™ LARGE REAR CARGO BARRIERS ARE IDEAL FOR SECURING YOUR EQUIPMENT.

## CARGO BARRIERS

- SCRATCH RESISTANT POLYCARB WINGS
- STEEL CONSTRUCTION
- 1/4" POLYCARB LEXAN® WINDOW
- 7 GAUGE WIRE WINDOW
- AVAILABLE FOR MOST SUV'S



# PRO-CELL

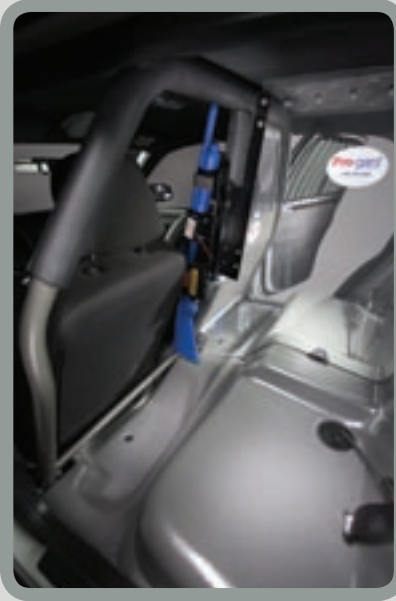
## Prisoner Transport System



P1000

1/2 CAGE SINGLE PRISONER  
TRANSPORT

- FULL RECLINE OF DRIVERS' SEAT
- FULL TRAVEL OF DRIVERS' SEAT
- EXTRA OFFICER STORAGE
- OPTIONAL VERTICAL MOUNTED GUN RACK



P1500

1/2 CAGE FULL ROLL BAR  
SINGLE PRISONER TRANSPORT

- FULL ROLL BAR SUPPORT
- FULL RECLINE OF DRIVERS' SEAT
- EXTRA OFFICER STORAGE
- OPTIONAL VERTICAL MOUNTED GUN RACK



P1826

FULL CAGE  
DUAL PRISONER TRANSPORT

- FULL ROLL BAR SUPPORT
- FULL TRAVEL OF DRIVERS' SEAT
- EXTRA OFFICER STORAGE
- RECESSED PANEL
- IDEAL FOR MALE/FEMALE SEPARATION
- OPTIONAL VERTICAL MOUNTED GUN RACK
- OPTIONAL HORIZONTAL MOUNTED GUN RACK

**Pro-gard**<sup>™</sup>  
PRODUCTS LLC.

OUR PATENTED PRO-CELL PRISONER TRANSPORT SYSTEM IS CONSIDERED TO BE THE BEST IN THE INDUSTRY. THIS ULTRA SECURE TRANSPORT SYSTEM REDUCES THE RISK OF PRISONERS HIDING CONTRABAND OR KICKING OUT THE REAR WINDOWS AND REDUCES THE RISK OF BIOHAZARD. CONSIDERING THE ALTERNATIVE, YOU CAN'T AFFORD TO GO WITHOUT IT.



ALL PRO-CELL TRANSPORT SYSTEMS INCLUDE: PARTITION, SEAT AND FLOOR PAN, WINDOW ARMOR, DOOR PANELS, & POLYCARB DIVIDER.

800 - 480 - 6680 [www.Pro-gard.com](http://www.Pro-gard.com)



5

WHETHER YOU'RE USING SHOTGUNS, AUTOMATIC WEAPONS, OR NON-LETHAL WEAPONS; WE CAN CUSTOMIZE A MOUNTING SYSTEM SPECIFICALLY FOR YOU AND YOUR VEHICLE, WITH SPACE SAVING MOUNTS AND A UNIQUE DESIGN. YOU'LL HAVE EASY ACCESS TO YOUR WEAPON AND PLENTY OF ROOM FOR EXTRA STORAGE. PLUS MOST CAN BE MOUNTED WITH OUR EXCLUSIVE NO HOLES DRILLED, NO TRIM CUT SYSTEM. LET PRO-GARD SECURE YOUR WEAPON WHILE YOU SECURE THE AREA.

6



## 5000 SERIES

### UNIVERSAL MOUNTING SERIES

- PARTITION, TRUNK, & SCREEN INSTALLATIONS
- ACCOMMODATES MULTIPLE WEAPONS AND ACCESSORIES
- STEEL CONSTRUCTION
- TIMER WITH 8 SECOND DELAY (INCLUDED)
- HANDCUFF, STRAIGHT, OR VENDING KEY OVERRIDE AVAILABLE



## 4900 SERIES



### FLOOR MOUNT SERIES

- MUZZLE DOWN FLOOR MOUNT
- ACCOMMODATES MULTIPLE WEAPONS AND ACCESSORIES
- STEEL CONSTRUCTION
- TIMER WITH 8 SECOND DELAY (INCLUDED)
- HANDCUFF, STRAIGHT, OR VENDING KEY OVERRIDE AVAILABLE



VERTICAL PARTITION MOUNT



## 5500 SERIES

### "PRO-CLAMP" SERIES

- OVERHEAD MOUNT
- NO HOLES DRILLED INSTALLATION
- SINGLE OR DUAL SYSTEM AVAILABLE
- ACCOMMODATES MULTIPLE WEAPONS AND ACCESSORIES
- STEEL CONSTRUCTION
- TIMER WITH 8 SECOND DELAY (INCLUDED)
- HANDCUFF, STRAIGHT, OR VENDING KEY OVERRIDE AVAILABLE

# GUN RACKS



G7210

## VERTICAL SPACE SAVER

- MUST BE INSTALLED WITH A SPACE SAVER PARTITION
- WEAPONS ARE RECESSED TO PROVIDE ADDITIONAL OFFICER SPACE
- ACCOMMODATES MULTIPLE WEAPONS AND ACCESSORIES
- STEEL CONSTRUCTION
- TIMER WITH 8 SECOND DELAY (INCLUDED)
- HANDCUFF, STRAIGHT, OR VENDING KEY OVERRIDE AVAILABLE

## 7000 SERIES

### VERTICAL SELF-SUPPORTING

- NO HOLES DRILLED INSTALLATION
- INSTALLED WITHOUT A PARTITION
- INTERCHANGEABLE MOUNTING BRACKET TO FIT SPECIFIC VEHICLE
- ACCOMMODATES MULTIPLE WEAPONS AND ACCESSORIES
- STEEL CONSTRUCTION
- TIMER WITH 8 SECOND DELAY (INCLUDED)
- HANDCUFF, STRAIGHT, OR VENDING KEY OVERRIDE AVAILABLE



G72\*\*

\*VEHICLE SPECIFIC

# ORGANIZERS

## D3000

- UTILITY SEAT ORGANIZER
- MAXIMUM STORAGE FOR PHONE, CAMERA, CLIPBOARD, FLASHLIGHT, FILES, MAPS, AND MORE.
- STURDY ABS CONSTRUCTION
- 2 COMPARTMENTS
- TOP: 8.5" X 13" X 4.5"
- BOTTOM: 3.75" X 13" X 4.5"



## D2950

- PORTABLE SEAT ORGANIZER
- BUILT IN HANDLE
- SECURE CLIPBOARD, FORMS, MACE, HANDCUFFS, AND MORE
- ADJUSTABLE BRACKETS FOR ANY SEAT OR MOUNTS TO ANY FLAT SURFACE
- STURDY ABS CONSTRUCTION
- 14" X 21" X 3.75"



# KEEP IT TOGETHER ON THE ROAD

8



## TRUNK ORGANIZER

- HEAVY ABS SHELL, CLEAR POLYCARB HINGED TOP WITH 3 REMOVABLE DIVIDERS
- ALLOW FOR EASY ACCESS TO SPARE TIRE AND COMMUNICATION OR VIDEO EQUIPMENT
- AVAILABLE FOR FORD CROWN VICTORIA/CHEVY IMPALA

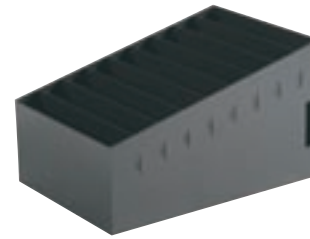
# TRUNK TRAYS & ORGANIZERS

## TRUNK TRAY

- ALUMINUM CONSTRUCTION WITH HEAVY DUTY FULL EXTENSION BALL BEARING SUPPORT SLIDES
- AVAILABLE FOR FORD CROWN VICTORIA/CHEVY IMPALA

## D2951

- BUILT-IN PRINTER SHELF
- ALL FEATURES OF D2950
- 14" X 21" X 3.75"



## D500

- MOUNTS SECURELY IN REAR OR FRONT SEAT
- DURABLE 14 GAUGE STEEL CONSTRUCTION
- ADJUSTABLE DIVIDERS
- ATTACHES WITH PASSANGER-SIDE OR REAR SEAT BELTS

OUR CUSTOMERS DEMAND STORAGE ACCESSORIES THAT FIT THEIR CHANGING TECHNOLOGY. THAT'S WHY WE CONTINUALLY REVOLUTIONIZE THE INDUSTRY BY KEEPING UP-TO-DATE WITH THE NEWEST TECHNOLOGY, AND PROVIDE YOU WITH PRODUCTS THAT ACCOMMODATE THOSE ADVANCEMENTS. SO IF YOU'RE LOOKING FOR A SYSTEM TO HELP ORGANIZE YOUR PAPERWORK IN THE CAR, OR NEED SOMETHING A LITTLE STRONGER TO HELP PROTECT YOUR BUMPER, WE'VE GOT YOU COVERED.



9

## SKID PLATES



- 1/4" ALUMINUM SKID PLATE
- NO HOLES DRILLED INSTALLATION
- OIL & FILTER MAY BE CHANGED WITH SKID PLATE INSTALLED
- PROVIDES COVERAGE FOR CHEVY IMPALA



- BLACK STEEL SKID PLATE
- NO HOLES DRILLED INSTALLATION
- OIL & FILTER MAY BE CHANGED WITH SKID PLATE INSTALLED
- PROVIDES COVERAGE FOR FORD CROWN VICTORIA & DODGE CHARGER



- BLACK STEEL SKID PLATE EXTENSION
- PROVIDES COVERAGE FOR FORD CROWN VICTORIA



DODGE CHARGER

## PUSH BUMPERS

- AVAILABLE FOR MOST POLICE PACKAGE VEHICLES
- NO HOLES DRILLED, NO TRIM CUT INSTALLATION
- STEEL CONSTRUCTION
- AUXILIARY LIGHT AND SPEAKER MOUNTING PLATFORM
- DURABLE POWDER COATED FINISH



**Pro-gard**<sup>™</sup>  
PRODUCTS LLC.



**800-480-6680**  
**Pro-gard.com**

7988 CENTERPOINT DRIVE • SUITE 400  
INDIANAPOLIS • INDIANA • 46256

P : 317 • 579 • 6680  
F : 317 • 579 • 6681