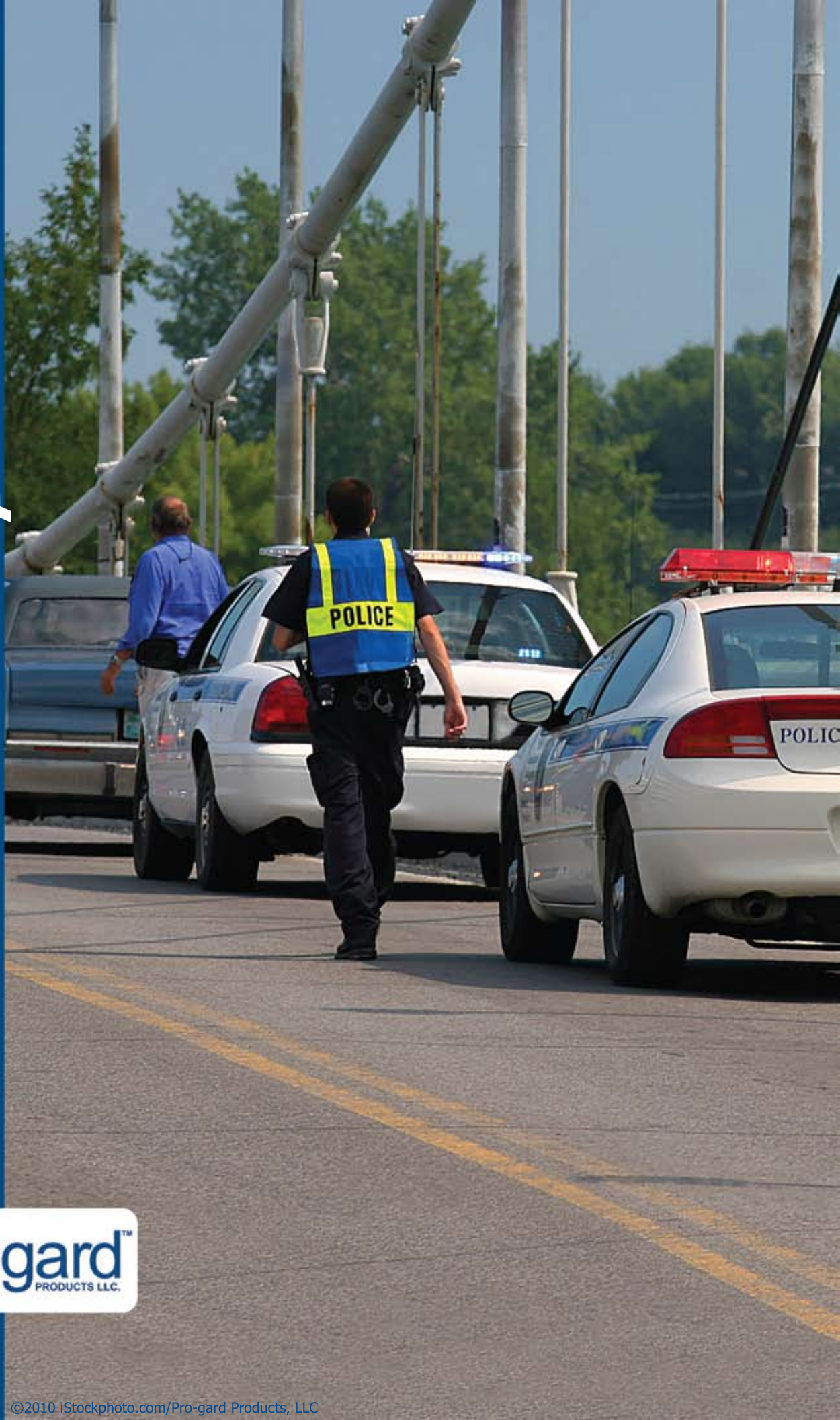


Anti-theft System



Vehicle Anti-theft Systems

Vehicle	Model Year	Description	Part Number
Crown Victoria	2005-2010	Plug and Play Module	SS26CV05
Crown Victoria	1998-2004	Module	SS26CV98
Expedition	2006-2010	Plug and Play Module	SS58EXPD06
F250	2006-2007	Plug and Play Module	SS82F2F06
F250/350	2008-2010	Plug and Play Module	SS82F23F08
F150	2009-2010	Module	SS81FT08
E-Series Van	2008-2010	Plug and Play Module	SS73FV06
E450	2008-2010	Plug and Play Module	SS83F4F
Explorer	2007-2010	Module	SS47EXPL05
Focus	2008-2010	Module	SS84FF08
Impala	2007-2010	Plug and Play Module	SS52I07
Tahoe/Suburban	2007-2010	Plug and Play Module	SS57TS07
Silverado	2007-2010	Plug and Play Module	SS85CS07
Trailblazer	2005-2010	Module	SS86CT08
Express Van	2008-2010	Plug and Play Module	SS72CV08
Charger	2008-2010	Module	SS56C08
Charger	2007-2010	Module	SS56C07
Ram 1500	2008-2010	Module	SS87DR08
Universal	--	Module	SSUNIV



Safestop Module

Toggle Switch
included with each module

Safestop Vehicle Anti-theft Systems

- Always On Tamper Proof Design**
 - Once turned on, Safestop's anti-theft functions will protect the vehicle whenever the ignition key is removed. Anti-theft functions cannot be overridden by shutting off the toggle switch.
 - Once activated, the anti-theft functions can only be shut down if the key is in the ignition.
- Automatic Function**
 - With system on, anti-theft functions are activated via the removal of the ignition key - no additional steps or processes to remember.
 - The vehicle maintains functionality of all electrical accessories including: heat, A/C, radio, TV/video surveillance equipment, computer, lights, life saving devices, etc.
- Hands Free Activation**
 - Can be wired to automatically activate when the light bar or siren is turned on.
- Plug-and-Play Installation**
 - Plug-and-play connectors for Ford and GM, only anti-theft device that is plug-and-play compatible to GM vehicles.
- Gun Lock Secure**
 - Eliminates access to weapons racks with an electronic gun lock once anti-theft functions are activated. Weapon will remain locked even if the momentary switch is pushed.
- Trunk Lock Secure**
 - Eliminates access to trunk via the factory trunk latch once anti-theft functions are activated.
- Brake Peddle-Engine Override**
 - Can be wired to instantly kill the engine via the break peddle when anti-theft system is activated.